

Ultra compact  
network scanner  
with easy  
integration into  
any business  
workflow

**ScanFront 300e/300eP**  
Network Scanner



**Canon**



# The easy way to share information.

Scanning and sharing information across the network has never been simpler than with Canon's ScanFront 300e/300eP. A huge colour touch-screen enables one-touch operation whilst embedded eCopy ShareScan® software allows seamless integration with many business applications and workflows. Remote management and sophisticated security capabilities make it as desirable to IT departments as it is to users.

## Reliable network scanning from a compact device

### Compact and robust

The network scanner's ultra-compact design allows the device to be conveniently placed in offices where space may be limited, such as in busy corporate departments, branch offices and reception areas. With its sleek but strong robust design it is also ideal at customer retail service points to capture client information such as processing application forms.

### Effortless operation

A large colour touch-screen enables seamless scanning operation. Scanned documents can be previewed with exceptional clarity in full colour, allowing quick-and-easy adjustments, prior to sending. A number of handy 'Scan to' buttons allow time-consuming workflows to be implemented with just a single touch.

### Impressive performance

Missed deadlines are a thing of the past with the ScanFront 300e/300eP, with productive scanning speeds of up to 27ppm and duplex scanning capabilities. Productivity enhancing features – such as Skip Blank Page and Text Orientation Recognition – mean that documents never need to be pre-sorted, saving valuable time.

### Versatile and dependable

The ScanFront 300e/300eP incorporates a straight paper path and robust roller system to deliver exceptionally reliable paper feeding and separation. Mixed sized batches of up to 50 sheets can be scanned with ease, and even embossed cards are accommodated. For added assurance, ultrasonic double-feed detection is incorporated on the ScanFront 300eP.

### High-quality scans

Advanced optical sensor technology produces clear, high-quality images in colour, grayscale or black and white. Automatic page size detection, auto colour detection, colour dropout and advanced text enhancement, and other efficiency-boosting features automatically enhance the readability of images without the need for post-processing, and deliver consistent results scan after scan.

### Fingerprint authentication

If you are a registered user, simply swipe your finger over the sensor to log in without having to enter a user ID or password (available on ScanFront 300eP only).

An intuitive interface makes it easy to automate paper-digital workflows and quickly send scanned documents to their destination – right from the device.

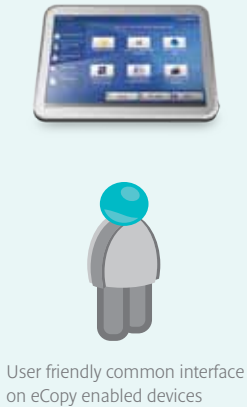




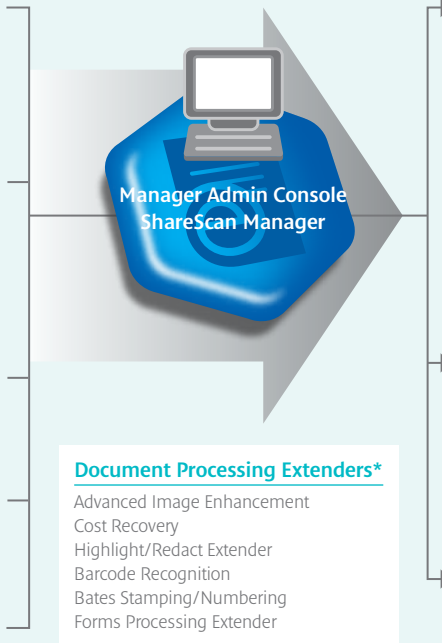
## Scan

## Process

## Connect



User friendly common interface on eCopy enabled devices



**Application Connectors\***

- Scan-to-Desktop
- Scan-to-File - Network Folder
- Scan-to-Print Connector
- eCopy Quick Connect for Custom Connections
- Autonomy iManage Worksite
- Microsoft SharePoint
- OpenText Connect Server (LiveLink)
- OpenText DM, eDocs Edition
- EMC Documentum
- Partner Developed Connectors\*\*

**Email & Fax\***

- Scan-to-Exchange & Notes Mail
- Scan-to-SMTP via LDAP Mail
- OpenText Fax Server - Right Fax Edition
- Fax via Exchange, Notes & SMTP

**Extensibility**

- eCopy ShareScan SDK

\* Configurations will vary depending on eCopy ShareScan versions, and any optional items.  
\*\* For full list of current optional connectors please contact your Canon office or check on Nuance website.

## Intelligent Capture with eCopy ShareScan technology

**The ScanFront 300e/300eP scanners, powered with eCopy ShareScan software, offer a powerful document imaging platform that transforms paper documents into data that is easily integrated into all commonly-used business applications and workflows.**

### Security made simple

The ScanFront 300e/300eP embedded with eCopy ShareScan delivers the highest levels of security whilst keeping things straightforward for users. Login authentication in ShareScan prevents any unauthorized access, while automatic generation of log files and graphical reports provides complete audit trails and tracking of every scan transaction by users. Device access can be granted using familiar Windows® login methods, or fingerprint authentication can be used for quick and convenient access\*\*\*. Scanned files can be easily encrypted before they're sent so that only those with the relevant password can view or edit them.

### Complex tasks made easy

ShareScan's intuitive interface allows you to perform complex scanning tasks in a matter of seconds. You can browse folders, enter file names and add index information whilst scanning.

Using Optical Character Recognition (OCR), data can be extracted from the scanned document at the point of capture, allowing for real-time validation and integration into existing business applications. This helps speed up delivery time into filing repositories and reduces the need for additional indexing processes.

### Reduced IT costs

Central management allows administrators to remotely manage and configure one, or even a fleet of ScanFront 300e/300eP scanners at the same time as their eCopy-enabled MFPs with ShareScan Services Manager. This keeps costs down as both set-up and updates can be undertaken quickly and efficiently, even when devices are located in offices hundreds of miles away.

### eCopy PDF Pro Office included

Powerful easy to use desktop PC application that lets you create, manipulate and convert PDF files to enable collaboration like never before, for dramatic productivity gains and cost savings.

### Added integration with eCopy Connectors

Various modules of Canon's embedded eCopy ShareScan software enables integration with popular business applications, document management systems, email and fax servers.

**eCopy Connectors** - Connectors are ShareScan modules that allow the ScanFront 300e/300eP to integrate with popular business applications and services, including document management systems, email and fax servers.

**Standard Connectors** - Provides general file sending functions for secure and convenient scanning. The core connectors include Scan-to-Desktop, Scan-to-Printer, Exchange Mail, LDAP Mail, Lotus Notes Mail, Fax via Exchange, Fax via SMTP and Fax via Lotus Notes.

**Optional Connectors** - Provide a common eCopy interface for seamless integration with popular industry applications. Several industry application connectors are available, enabling more seamless integration with popular industry content management and workflow solutions. Additional customised connectors are continually being developed by software integrators using the available eCopy ShareScan SDK Connector.

\*\*\* Fingerprint authentication is available only on the ScanFront 300eP.

# Specifications: ScanFront 300e/300eP

Type Document Reading Sensor Optical Resolution Light Source Reading Side Operation Panel Fingerprint Sensor	Desktop Type Sheet Fed Network Scanner CMOS CIS 1 Line Sensor 600dpi RGB LED Front / Back / Duplex 8.4" SVGA Liquid Crystal Display with Touch Panel Optical Sweep Type Sensor (Scan Front 300eP only)	
Interface	High Speed USB 2.0 x 4 LAN 10BaseT/100BaseTX Connector	
Dimensions Weight Power Requirements Power Consumption Operating Environment	Tray closed: 310 (W) x 161 (D) x 220 (H) mm Tray opened: 310 (W) x 298 (D) x 571 (H) mm Approx. 3.6 kg AC200 - 240V (50/60Hz) Scanning: 29W, Display Off mode: 10W Power Turned Off: less than 1W 10 - 32.5°C (50 - 90.5°F), Humidity: 20 - 80% RH	
<b>READING SPEED*</b> (Portrait, A4, 200dpi)	<b>ScanFront 300e</b>	<b>ScanFront 300eP</b>
	B & W Grayscale Colour	26ppm/40ipm 25ppm/33ipm 18ppm/17ipm
<b>DOCUMENT SPECIFICATIONS</b> Width Length Thickness	50.8 - 216mm 53.9 - 355.6mm	
	Automatic Feeding 52 - 209g/m <sup>2</sup> (0.06 - 0.25mm) Bypass Mode 40 - 209g/m <sup>2</sup> (0.05 - 0.25mm)	
International Standard Card Business Card Long Document Mode Paper separation Feeder Capacity	Width: 53.9mm, Length: 85.5mm, Thickness: 0.76mm (Embossed card and horizontal scanning is supported) Width: > 50.8mm, Length: > 53.9mm Thickness: <300g/m <sup>2</sup> (0.76mm or less) Maximum: Legal = 355.6mm Retard Roller (Reversing Separator Roller) 50 sheets (80g/m <sup>2</sup> )	
<b>OUTPUT</b> Resolution Mode	100 x 100dpi, 150 x 150dpi, 200 x 200dpi, 300 x 300dpi, 400 x 400dpi, 600 x 600dpi Black & White, Error Diffusion, Advanced Text Enhancement, 256-level Grayscale (8bit), 24-bit Colour	

<b>PRODUCT FEATURES</b>	Deskew, Auto Page Size Detection, Skip Blank Page, Text Orientation Recognition, Colour Dropout (RGB) / Enhancement, Advanced Text Enhancement, Prevent Bleed Through / Remove Background, Image Rotation, Inverse, Mirror, Scaling, Ultrasonic Double Feed Detection (ScanFront 300eP model only)
<b>SOFTWARE**</b> <b>eCopy ShareScan Options</b> <b>(Sold separately to device)</b>	eCopy ShareScan Elements, eCopy ShareScan Office, eCopy ShareScan Suite
<b>Application Connectors</b>	Scan-to-Desktop Scan-to-File - Network Folder Scan-to-Print Connector eCopy Quick Connect for custom connections Autonomy iManage Worksite Microsoft SharePoint OpenText Connect Server (LiveLink) OpenText DM, eDocs Edition EMC Documentum Partner Developed Connectors (For latest information about available ShareScan Connectors & other Partner developed connectors please visit the Nuance website here - <a href="http://www.nuance.com/for-business/by-product/ecopy/ecopy-connectors-and-extenders">http://www.nuance.com/for-business/by-product/ecopy/ecopy-connectors-and-extenders</a> )
<b>Application Extenders</b>	Advanced Image Enhancement Cost Recovery Highlight/Redact Extender Barcode Recognition Bates Stamping/Numbering Forms Processing Extender
<b>eCopy ShareScan Server Requirements:</b>	O/S: Microsoft Windows XP Pro (SP3 or later), Vista Business or Enterprise Edition SP1 or later, Windows 2003 Server, Windows 2008 Server, Windows 7 Business/Ultimate
<b>Consumables</b>	Exchange Roller Kit
<b>Suggested Daily Duty Cycle</b>	Approx. 3,000 scans/day
<p>* Actual scanning speed may vary depending on data transfer time and your system configuration.</p> <p>** Available software functions vary depending on the eCopy ShareScan licence provided with your ShareScan package and any optional items.</p> <p>Some images are simulated for clarity of reproduction. All data is based on Canon's standard testing methods. This leaflet and the specifications of the product have been developed prior to the date of product launch. Final specifications are subject to change without notice and ©. All company and/or product names are trademarks of their respective manufacturers in their markets and/or countries.</p>	



eCopy® PDF Pro Office



Canon Electronics Inc  
canon.com

Canon Europe  
canon-europe.com

English Edition 0168W953  
V1.07/12  
© Canon Europa N.V.,  
2012

Canon (UK) Ltd  
Woodhatch, Reigate  
Surrey, RH2 8BF  
Tel: 01737 220000  
Fax: 01737 220022  
canon.co.uk/scanners

Canon Ireland  
3006 Lake Drive  
Citywest, Saggart  
Co. Dublin, Ireland  
Tel: 01 2052400  
Fax: 01 2052525  
canon.ie

