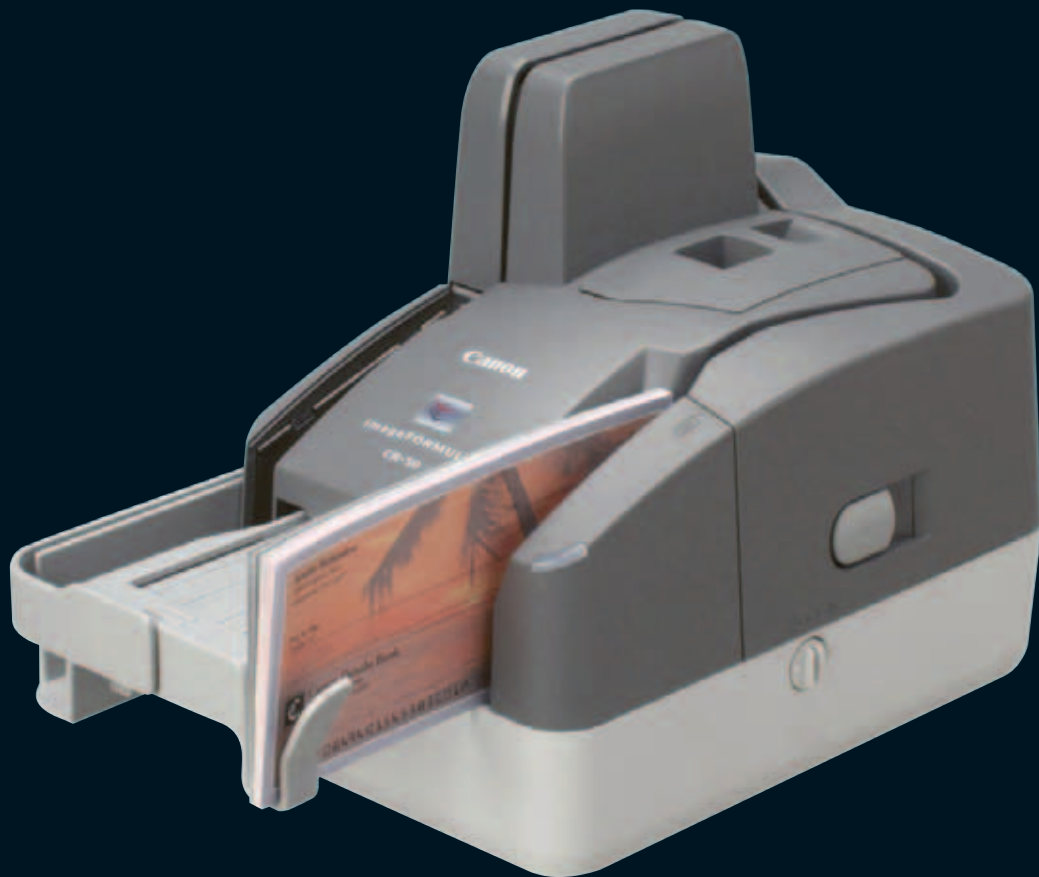


Fast, Accurate  
and dependable  
counter-top  
cheque scanning.

**CR-50**  
Ultra-Compact  
Cheque Scanner.

**you can**



imageFORMULA

**Canon**



# Convenient and productive cheque scanning tailor-made for counter-top transactions.

For banks, financial service businesses and retailers that need to process cheque payments at high speed, the imageFORMULA CR-50 is the ideal solution. Compactly-built, it is packed with intelligent software that can be used in the most demanding environments – such as front of branch counters or remote capture agencies, where maintaining a fast and accurate throughput of transactional data is critically important.

## **Advanced technology to boost productivity and performance**

The CR-50 offers advanced features that are built on Canon's reputation for innovation and quality in the cheque scanner market. With its ultra-compact design, the CR-50 offers high-speed scanning of up to 50 cheques per minute, precise MICR (Magnetic Ink Character Recognition) reading and a built-in imprinter.

Easy to use and maintain, the CR-50 offers a powerful means to boost your productivity and performance.

## **Productive scanning and ultra-compact design**

The CR-50 scans at an impressive 50 cheques per minute (B&W) and holds up to 50 cheques in the document feeder – so even the busiest users can work without delays. Its compact design means the CR-50 can sit comfortably on desktops or counters where space is often limited.

## **MOCR: for precise, consistent performance**

Equipped with a Canon patented magnetic-head, the imageFORMULA CR-50 can read MICR data with high accuracy for reduced transaction errors. MICR reading is supported by OCR (MOCR) processing to ensure precision data capture, without sacrificing speed.

## **Innovative, high performance image processing**

The CR-50 offers advanced image processing capabilities that build on Canon's high precision optical technology. The Fine Text Filtering feature ensures that vital information is captured and unnecessary 'noise' is eliminated from patterned backgrounds.

A built-in pre-scan imprinter also comes as a standard feature on the CR-50, for capturing and printing important information to meet audit trail requirements.



Type of business	Application
Banks and financial services branches	For payments, deposits and withdrawals
Public sector centres	For payments – e.g. utility bills, Post Office transactions
Medical practices and pharmacies	For payments and subsequent insurance claims
Retail stores	For checkout payments

CR-50: for fast, accurate colour cheque-scanning in environments where space is limited.

### Consistent performance you can depend on

Canon's superior paper handling technology allows mixed-batch documents or single items to be processed at speeds that are consistent, reliable and uninterrupted. For extra reassurance, features such as infrared double feed detection and paper thickness adjustment maximise production levels and ensure that end-of-day processing deadlines are met. Even under demanding workloads, the CR-50 is able to process up to 2,500 scans per day.

### Easy maintenance that reduces downtime

The CR-50 is designed with a side-opening cover that allows for easy maintenance reducing the need for costly off-site servicing. The useful Remaining Ink Alarm feature lets you know when the imprinter cartridge will need replacing, so you can plan and budget ahead. To help you monitor performance, the CR-50's Data Logging Tool lets you track key performance metrics, such as the total number of scans, double feeds, imprint numbers and the LED's hours of use.

### Software designed to perform

Canon's Scanning Utility software enables fast and intuitive cheque and image capture, file saving, image viewing and additional functions – helping you scan data into your workflows quickly and accurately. Using the industry standard Ranger driver based on Silver Bullet™, system integrators can easily incorporate the CR-50 into cheque processing workflows; while the Software Development Kit (SDK) enables developers to integrate the CR-50 seamlessly with custom software applications. Firmware updates are straightforward to execute, with both driver and firmware upgrades achievable in one update file.

# Specifications: CR-50 Ultra-Compact Cheque Scanner

Type Document Reading Sensor Optical Resolution Light Source Reading Side Interface Dimensions Weight Power Requirements Power Consumption Operating Environment Environmental Compliance	Desktop Type Sheet Fed Scanner CMOS CIS Sensor 600dpi RGB LED Simplex / Duplex High Speed USB 2.0 Tray closed: 140 (W) x 223 (D) x 188 (H) mm Approx. 2.0 kg AC220 - 240V (50/60Hz) Scanning: 21W (or less), Sleep Mode: less than 4W 10 - 32.5°C (50 - 90.5°F), Humidity: 20 - 80% RH RoHS and ENERGY STAR
<b>READING SPEED*</b> (American Cheque, 200dpi) B & W Greyscale Colour	50cpm (20cpm at 300dpi) 50cpm (20cpm at 300dpi) 20cpm
<b>DOCUMENT SPECIFICATIONS</b> Width Length Thickness  Paper separation Sorting Pockets Feeder Capacity	54 - 108mm 80 - 228mm Normal: 60 - 120g/m <sup>2</sup> (0.08 - 0.2mm) Infrared double feed detection ON: 81 - 105g/m <sup>2</sup> (0.10 - 0.14mm) Comb-shaped roller method One pocket 50 sheets

<b>OUTPUT MODE</b>	Binary: Black & White/Error Diffusion/Fine Text Filtering Greyscale: 4-bit / 8-bit Colour: 24-bit
Output Resolution	Binary & Greyscale: 100, 200, 300dpi Colour: 100, 200dpi
<b>PRODUCT FEATURES</b>  Imprinter	Automatic Page Size Detection, Deskew, Fine Text Filtering, Infrared Double Feed Detection, Edge Emphasis, Automatic Feeding Option, Border Removal, Addon Function, Image Quality Assurance**, Logging Tool. Built-in Imprinter, Ink Level Alarm
<b>BUNDLED SOFTWARE</b>  MICR/OCR Options	Supported OS: Windows XP/ VISTA/ 7 Canon Scanning Utility for CR-50, Ranger Driver MICR: E13B / CMC-7, OCR: E13B / OCR-A / OCR-B Software Development Kits (3 Types): CR-SDK , CR-SDK.NET, Ranger API (Available through Canon Business Solutions Developer Programme - <a href="http://www.canon-europe.com/bsdsp">www.canon-europe.com/bsdsp</a> )
Consumables	Ink Cartridge for Imprinter
Suggested Daily Duty Cycle	Approx 2500 sheets / day
<p>* The scanning speed depends on the specification of PC and the setting of functions. ** Image Quality Assurance - This function can only be activated with CR-SDK. Some images are simulated for clarity of reproduction. All data is based on Canon's standard testing methods. This leaflet and the specifications of the product have been developed prior to the date of product launch. Final specifications are subject to change without notice™ and ©. All company and/or product names are trademarks of their respective manufacturers in their markets and/or countries.</p>	



Canon Electronics Inc  
[canon.com](http://canon.com)

Canon Europe  
[canon-europe.com](http://canon-europe.com)

English Edition  
© Canon Europa N.V.,  
2011

Canon Europe Ltd  
3 The Square  
Stockley Park  
Uxbridge  
Middlesex  
UB11 1ET  
United Kingdom